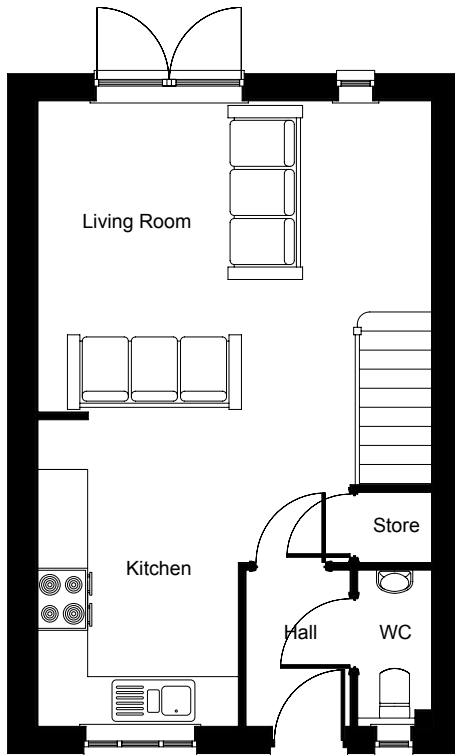


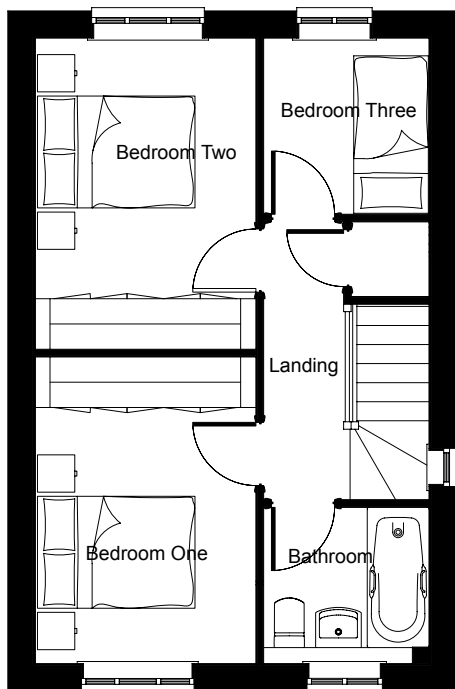
# The Tarleton

3 bedroom mews/semi-detached home



## Ground Floor

<b>LIVING ROOM</b>	4.74m (max) x 3.75m 15' 5" (max) x 12' 3"
<b>KITCHEN</b>	3.70m x 2.42m 12' 1" x 7' 9"
<b>WC</b>	1.88m x 0.89m 6' 1" x 2' 9"



## First Floor

<b>BEDROOM 1</b>	3.70m x 2.66m 12' 1" x 8' 7"
<b>BEDROOM 2</b>	3.75m x 2.66m 12' 3" x 8' 7"
<b>BEDROOM 3</b>	2.12m x 1.99m 6' 9" x 6' 5"
<b>BATHROOM</b>	1.99m x 1.88m 6' 5" x 6' 1"

We operate a policy of continuous product development and individual features such as windows, garages and elevation treatments which may vary between individual plots and developments. Homes may be constructed from brick, stone or artificial stone or timber and all room sizes are approximate. Plots may be handed and garages may be single or double. Kitchen and bathroom layouts are indicative and any furniture layout is for illustrative purposes only. Whilst every effort has been made to ensure the information is correct it is designed specifically as a guide and may be subject to change during construction. Consequently, these particulars do not constitute or form any part of the contract. Individual detailed plans and specification are available, please see the Sales Consultant on the development for specific plot details prior to reservation.